



State of Vermont
Department of Corrections
103 South Main Street
Waterbury, VT 05671-1001
www.doc.state.vt.us

[phone] 802-241-2442
[fax] 802-951-5017
[fax] 802-951-5086

TO: Members, Joint Corrections Oversight Committee
FROM: Andrew Pallito, Commissioner *AP*
DATE: June 23, 2014
SUBJECT: Monthly Reports

The attached monthly (May) and quarterly reports are being forwarded to you.

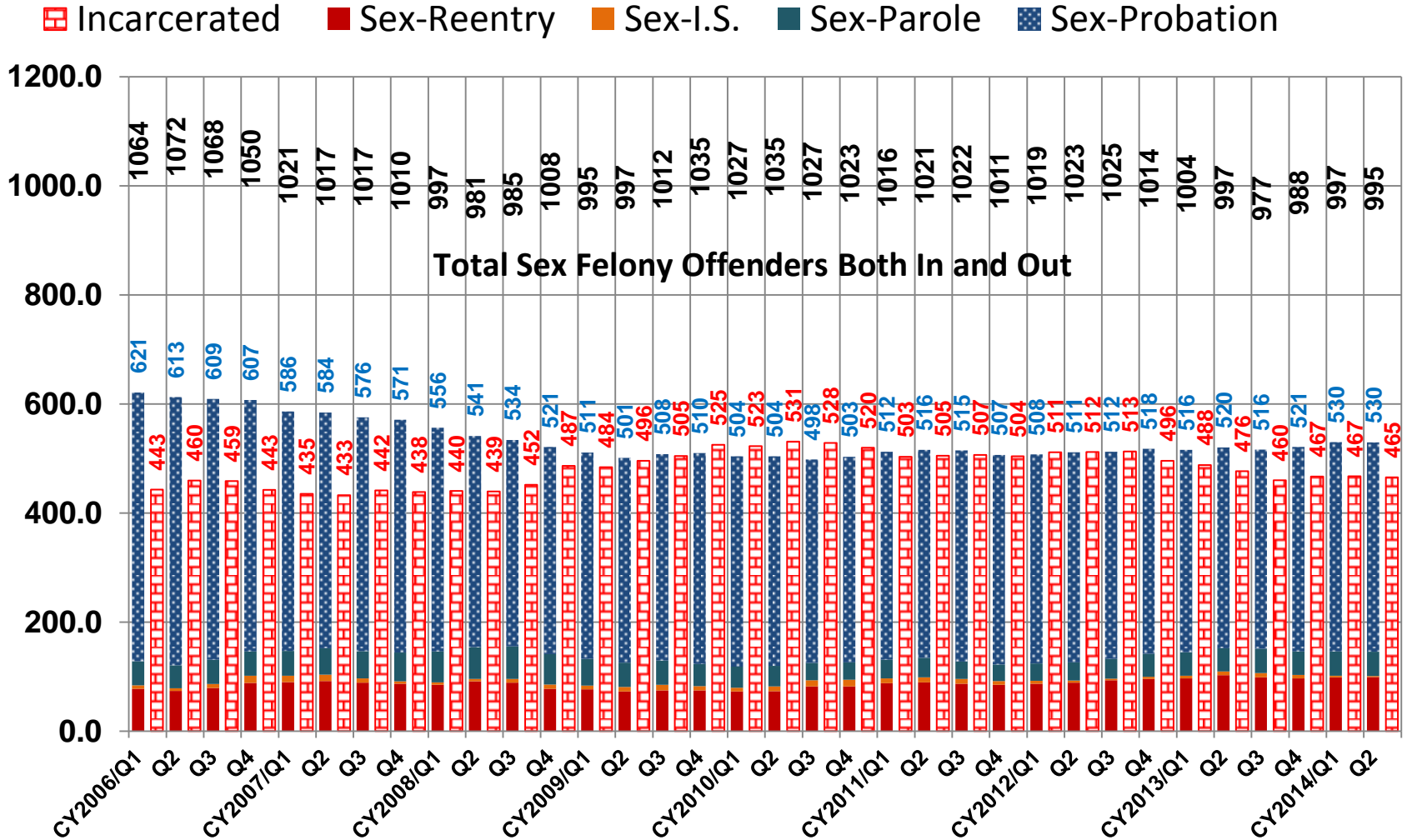
1. Detainees, Average Daily Populations
2. Sex Offenders: Jail & Community Supervision
3. Incarcerated: Property & Drug Felons
4. Inmates Past Min: Lack of Approved Housing
5. Monthly Average Custody Population less Parole & probation July 2012 to Date
6. Segregation and Self Harm Behavior Highlights (April)

If you have any questions, please do not hesitate to contact me.

Attachment(s)

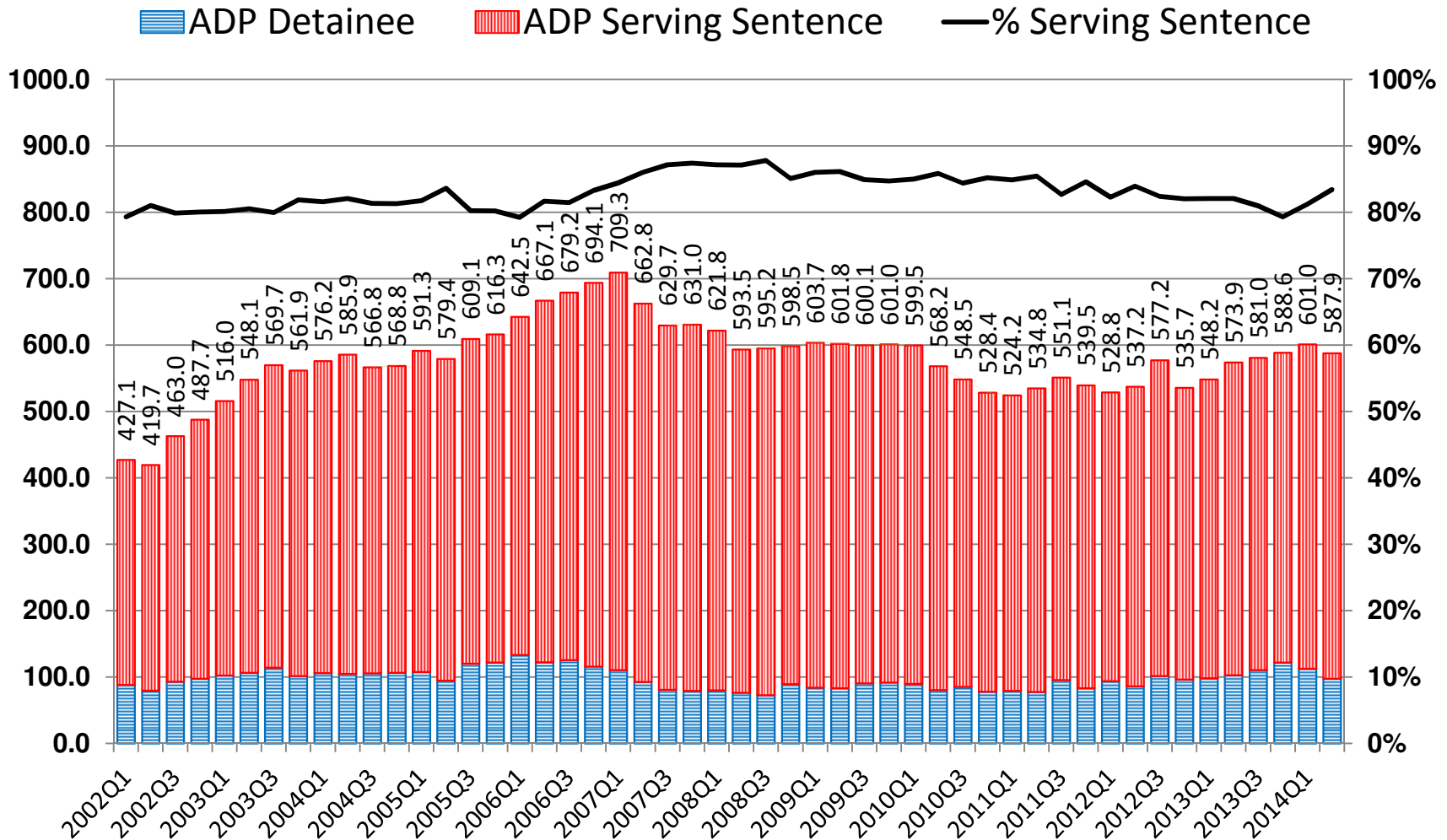
AP/jh

Sex Felony Offenders: Jail & Community Supervision By Legal Status



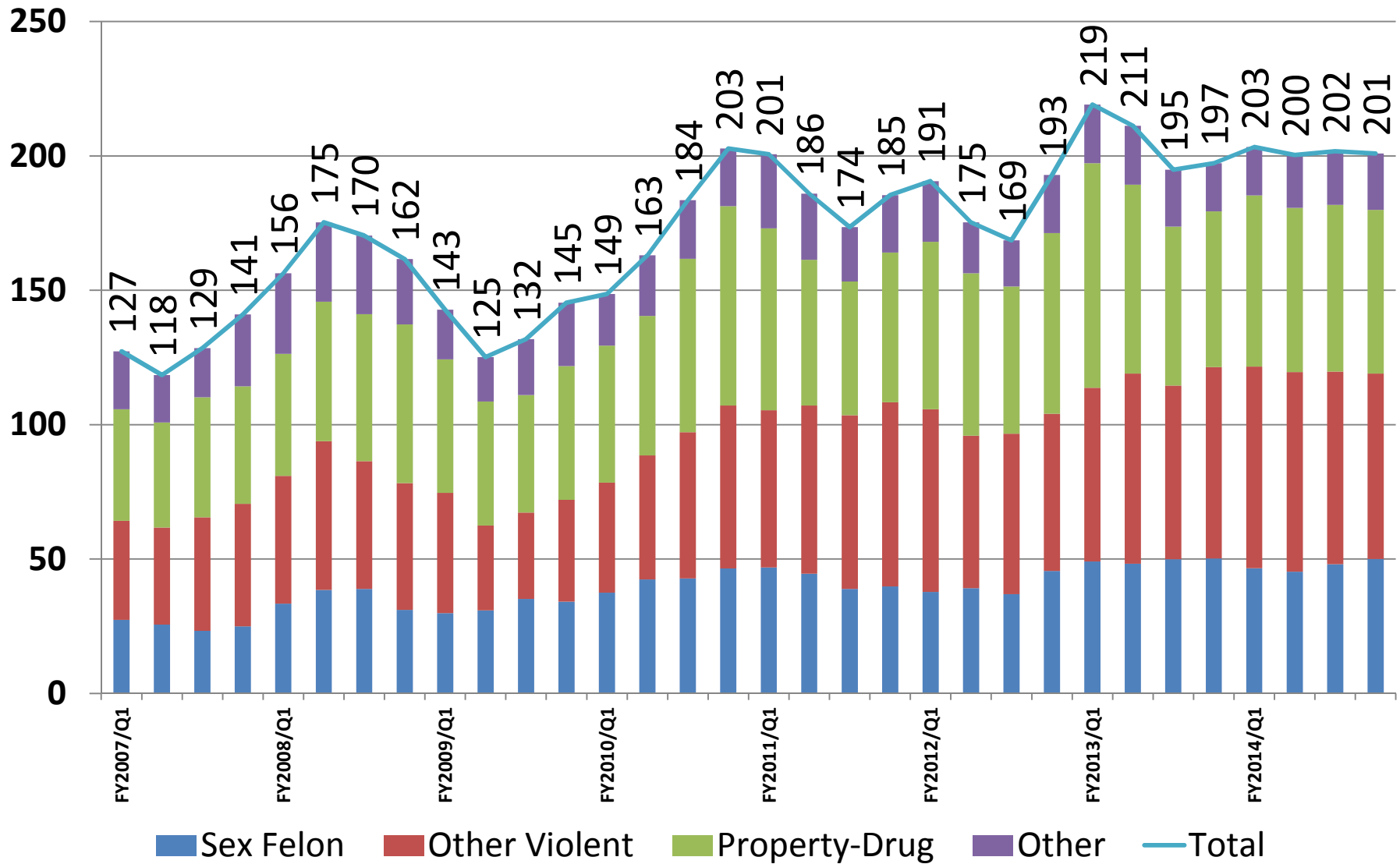
CY2014/Q2 as of May 2014.

Incarcerated Property & Drug Felons As Most Serious Offense



Persons with both property/drug felonies and more serious (violent) felonies are excluded from these counts. CY2014/Q12 as of May 2014.

Inmates Past Minimum Release, Lacking Housing Breakdown by Type of Offense



FY2014/Q4 as of May 2014

Inmates Past Minimum, Lacking Housing

FYEAR/QTR	Sex Felon	Other Violent	Property-Drug	Other	Total
FY2007/Q1	27.4	36.9	41.5	21.5	127
FY2007/Q2	25.6	36.1	39.1	17.7	118
FY2007/Q3	23.3	42.2	44.6	18.4	129
FY2007/Q4	25.0	45.5	43.7	26.8	141
FY2008/Q1	33.5	47.5	45.4	30.0	156
FY2008/Q2	38.5	55.3	51.9	29.5	175
FY2008/Q3	38.9	47.5	54.7	29.3	170
FY2008/Q4	31.1	47.2	59.0	24.3	162
FY2009/Q1	29.9	44.8	49.7	18.5	143
FY2009/Q2	30.9	31.5	46.1	16.6	125
FY2009/Q3	35.2	32.1	43.7	20.8	132
FY2009/Q4	34.2	37.9	49.8	23.6	145
FY2010/Q1	37.5	41.0	50.9	19.3	149
FY2010/Q2	42.4	46.2	52.0	22.5	163
FY2010/Q3	42.8	54.4	64.5	21.8	184
FY2010/Q4	46.5	60.6	74.2	21.4	203
FY2011/Q1	46.8	58.6	67.6	27.6	201
FY2011/Q2	44.6	62.5	54.2	24.6	186
FY2011/Q3	38.9	64.7	49.8	20.2	174
FY2011/Q4	39.9	68.4	55.7	21.3	185
FY2012/Q1	37.7	68.0	62.3	22.6	191
FY2012/Q2	39.2	56.7	60.4	19.0	175
FY2012/Q3	37.0	59.7	54.8	17.2	169
FY2012/Q4	45.6	58.4	67.2	21.7	193
FY2013/Q1	49.1	64.7	83.5	21.8	219
FY2013/Q2	48.3	70.7	70.3	21.9	211
FY2013/Q3	50.0	64.6	59.2	21.1	195
FY2013/Q4	50.2	71.2	58.0	17.9	197
FY2014/Q1	46.6	75.0	63.7	18.0	203
FY2014/Q2	45.3	74.3	61.0	19.7	200
FY2014/Q3	48.1	71.7	62.0	19.9	202
FY2014/Q4 (as of May)	50.1	69.0	60.9	20.9	201

Monthly Average Custody Population less Parole & Probation - Latest Two Fiscal Years (to date)

Average Monthly Populations -- July 2012 - June 2013														
FY 2013 Month	PAF	SCS	Cond. Reentry	Home Confine	Subtot Comm	Incarc OOS	Incarc. In VT	Subtotal Incarc.	Totals	Home Detainee	Incarc. Detainee	Incarc. Sentd	Incarc. Male	Incarc. Female
Jul	1205	6	859	35	2104	482	1609	2091	4202	7	396	1695	1939	152
Aug	1209	7	845	33	2061	495	1616	2110	4171	7	431	1680	1951	159
Sep	1182	7	840	29	2029	511	1614	2125	4153	6	438	1687	1965	160
Oct	1180	7	852	30	2038	510	1596	2106	4144	6	434	1672	1953	152
Nov	1212	7	862	30	2080	504	1582	2086	4166	6	428	1658	1935	151
Dec	1212	7	856	33	2074	502	1546	2048	4122	5	400	1648	1917	131
Jan	1230	7	855	30	2091	508	1541	2049	4140	4	395	1653	1916	133
Feb	1285	6	855	29	2146	510	1544	2053	4200	4	396	1658	1921	132
Mar	1319	6	846	28	2171	503	1549	2052	4223	3	396	1656	1908	144
Apr	1338	6	820	30	2164	487	1602	2089	4253	5	406	1683	1938	151
May	1334	7	795	35	2136	487	1574	2061	4197	6	386	1675	1909	152
Jun	1289	7	782	33	2078	478	1594	2072	4150	7	392	1680	1913	159
ADP FY2013	1249.5	6.6	838.7	31.4	2094.8	498.0	1580.5	2078.5	4178.7	5.4	408.1	1670.4	1930.4	148.1

Average Monthly Populations -- July 2013 - June 2014														
FY 2014 Month	PAF	SCS	Cond. Reentry	Home Confine	Subtot Comm	Incarc OOS	Incarc. In VT	Subtotal Incarc.	Totals	Home Detainee	Incarc. Detainee	Incarc. Sentd	Incarc. Male	Incarc. Female
Jul	1247	7	773	23	2050	475	1623	2097	4153	6	417	1680	1932	166
Aug	1220	7	761	20	1988	472	1620	2092	4080	3	435	1657	1936	156
Sep	1208	7	738	21	1953	472	1658	2130	4084	2	443	1688	1967	163
Oct	1232	7	763	24	2002	495	1615	2110	4112	3	430	1680	1947	163
Nov	1211	7	765	24	1983	507	1606	2114	4096	3	434	1680	1948	166
Dec	1171	8	782	24	1960	501	1590	2091	4051	3	412	1679	1931	160
Jan	1103	9	770	24	1883	498	1623	2121	4004	3	423	1699	1965	156
Feb	1087	11	778	26	1877	501	1647	2148	4024	4	431	1717	1988	160
Mar	1050	16	787	26	1853	502	1646	2148	4001	4	425	1723	1985	163
Apr	1122	21	784	34	1927	495	1636	2130	4058	4	392	1738	1964	166
May	1128	26	777	36	1931	488	1608	2097	4028	3	382	1715	1932	165
Jun														
ADP FY2014	1161.8	11.5	770.7	25.5	1944.0	491.4	1624.8	2116.2	4063.7	3.5	420.3	1696.0	1954.1	162.1

Vermont Department of Corrections
Segregation and Self Harm

Mar-14		Segregation totals										SFI Only										
Flow	Census	Facility	# of I/Ms	# of episodes	Admin episodes	LOS range *	Disc episodes	LOS range	Admin I/Ms	Episodes	LOS range *	I/Ms	Disc Episodes	LOS range								
															Admin episodes	LOS range	Disc Episodes	LOS range				
ADC	377	CRCF	47	44	8	1-5	36	1-191	1	1	1-16	4	4	1-7								
143	332	MVRCF	20	20	5	1-29	15	1-49	0	0	0	0	0	0								
139	458	NERCF	74	59	48	1-274	11	1-71	0	0	0	1	1	1-12								
522	540	NSCF	48	44	6	1-143	38	1-241	2	2	1-19	3	3	1-29								
224	363	NWSCF	81	76	39	1-182	37	1-234	2	2	1-4	5	5	1-20								
102	116	SESCF	0	0	0	0	0	0	0	0	0	0	0	0								
350	563	SSCF	45	47	5	1-93	50	1-476	1	1	1-19	10	10	1-82								
State		1647		2749		315		290		111		187		6		6		23		23		
Statewide ranges:																						
Out of State Segregation Summary March 2014																						
Segregation totals															SFI totals							
															Admin				Disc			
ADC	Flow Census	Facility	# of I/Ms	# of episodes	Admin episodes	LOS range	Disc episodes	LOS range	I/Ms	Episodes	LOS range	I/Ms	Episodes	LOS range								
463	0	Lee - KY	0	0	0	0	0	0	0	0	0	0	0	0								
38	0	AZ	0	0	0	0	0	0	0	0	0	0	0	0								
1	0	Other	0	0	0	0	0	0	0	0	0	0	0	0								
502	0	OOS total	0	0	0	0	0	0	0	0	0	0	0	0								
Statewide Ranges:																						
2149		2749		315		290		111		187		6		6		23		23				
SFI Inmates in Close Custody Housing Not Appearing in Segregation Section of this Report																						
A problem in the data entry system has affected the format and formula of "length of stay" numbers. The Department is working to find and correct this problem.																						
State		14		13		0		0		0		0		0		0		0		0		

Vermont Department of Corrections
Segregation and Self Harm

SIB Behavior in All Locations - Non-SFI and SFI									
Total Non-SFI					Total SFI				
Rating	B50	B51	B52	B53	Rating	B50	B51	B52	B53
CRCF	19	0	0	0	CRCF	1	0	0	0
MVRCF	0	0	0	0	MVRCF	0	0	0	0
NERCF	3	0	0	0	NERCF	0	0	0	0
NSCF	5	1	0	0	NSCF	4	0	0	0
NWSCF	1	1	0	0	NWSCF	0	0	0	0
SSCF	10	1	0	0	SSCF	9	1	0	0
SHCF	0	1	0	0	SHCF	0	0	0	0
State totals:	38	3	0	0	State totals:	14	1	0	0
SIB Behavior by SFI Away from General Population									
In Therapeutic Management Units					In Seg or Restricted Close Custody				
Rating	B50	B51	B52	B53	Rating	B50	B51	B52	B53
CRCF	0	0	0	0	CRCF	0	0	0	0
MVRCF	0	0	0	0	MVRCF	0	0	0	0
NERCF	0	0	0	0	NERCF	0	0	0	0
NSCF	0	0	0	0	NSCF	0	0	0	0
NWSCF	0	0	0	0	NWSCF	0	0	0	0
SSCF	0	0	0	0	SSCF	0	0	0	0
State totals:	0	0	0	0	State totals:	0	0	0	0
KEY					KEY				
ADC = Average Daily Census	SIB = Self-injurious behavior				CCWC = Caledonia Community Work Camp	(No Seg)			
SFI = Serious Functional Impairment					CRCF = Chittenden Regional Correctional Facility				
IM = Inmate	B50 = no injury or slight				NSCF = Northern State Correctional Facility				
Admin = Administrative	B51 = minor injury				MVRCF = Marble Valley Regional Correctional Facility				
Disc = Disciplinary	B52 = substantial injury				NERCF = Northeast Regional Correctional Facility				
LOS = Length of Stay	B53 = life threatening injury				NWSCF = Northwest State Correctional Facility	(No Seg)			
					SEWC = Southeast Work Camp				
					SSCF = Southern State Correctional Facility				
					SHCF = Beattyville, KY				

March 2014 Vermont DOC Segregation, Self Harm & SFI Summary

Inmates Designated Serious Functionally Impaired (SFI)

- During the month of March 2014, a total of 141 inmates designated SFI were housed in a VDOC facility (including units out of state) for one or more days.
- The average daily number of SFI inmates during this month was 123. This represents approximately 7.5% of in-state ADP and approximately 5.7% of total ADP (including OOS facilities).
- During March 2014 there were 18 instances of re-admission to custody or new designation of an SFI inmate, and 21 instances of the release from incarceration or removal from designation of such inmates.

Segregation:

- In March 2014, 315 inmates were placed on either administrative or disciplinary segregation status for one or more days. This is approximately 11.5% of all inmates housed in-state during that period for one or more days.
- These 315 inmates were involved in 290 total episodes of segregation status.
- Of the 111 episodes of administrative segregation status, 6 involved inmates designated SFI, or approximately 5% of such episodes.
- Of the 187 episodes of disciplinary segregation status, 23 involved inmates designated SFI, or approximately 12% of such episodes.

Close Custody

- In addition to those counted above, 14 inmates designated SFI resided in units outside of general population for one or more days due to close custody status.

Self Harm

- A total of 56 episodes of self harm related behavior were recorded in March 2014
- Of these 56 events, a total of 14 occurred during segregation or close custody housing, 5 of which involved SFI designated inmates.
- Another 6 episode of self harm related behavior occurred in locations set aside for therapeutic management, 6 of which involved SFI designated inmates.
- Of the 56 episodes of reported self harm related behaviors, 2 episodes were of medium lethality (substantial injury or danger requiring care outside of DOC facilities), 0 additional episodes were of high lethality (severely life threatening), and 0 deaths occurred as a result of self harm.

April 2014 Vermont DOC Segregation, Self Harm & SFI Summary

Inmates Designated Serious Functionally Impaired (SFI)

- During the month of April 2014, a total of 136 inmates designated SFI were housed in a VDOC facility (including units out of state) for one or more days.
- The average daily number of SFI inmates during this month was 117. This represents approximately 7.5% of in-state ADP and approximately 5.5% of total ADP (including OOS facilities).
- During April 2014 there were 17 instances of re-admission to custody or new designation of an SFI inmate, and 18 instances of the release from incarceration or removal from designation of such inmates.

Segregation:

- In April 2014, 292 inmates were placed on either administrative or disciplinary segregation status for one or more days. This is approximately 11.2% of all inmates housed in-state during that period for one or more days.
- These 292 inmates were involved in 270 total episodes of segregation status.
- Of the 106 episodes of administrative segregation status, 8 involved inmates designated SFI, or approximately 7.5% of such episodes.
- Of the 180 episodes of disciplinary segregation status, 14 involved inmates designated SFI, or approximately 7.8% of such episodes.

Close Custody

- In addition to those counted above, 27 inmates designated SFI resided in units outside of general population for one or more days due to close custody status.

Self Harm

- A total of 66 episodes of self harm related behavior were recorded in April 2014
- Of these 66 events, a total of 17 occurred during segregation or close custody housing, 3 of which involved SFI designated inmates.
- Another 8 episodes of self harm related behavior occurred in locations set aside for therapeutic management, 3 of which involved SFI designated inmates.
- Of the 66 episodes of reported self harm related behaviors, 2 episodes were of medium lethality (substantial injury or danger requiring care outside of DOC facilities), 0 additional episodes were of high lethality (severely life threatening), and 0 deaths occurred as a result of self harm.

Vermont Department of Corrections
Segregation and Self Harm

Apr-14		Segregation totals										SFI Only			
Flow Census	Facility	# of I/Ms	# of episodes	Admin episodes	LOS range	Disc episodes	LOS range	Admin I/Ms	Admin Episodes	LOS range *	I/Ms	Disc Episodes	LOS range*		
ADC	170	368	25	3	3-16	22	1-27	1	1	16	1	1	6		
	139	285	19	2	4	17	90	0	0	0	0	0	0		
	243	423	76	52	277	20	68	0	0	0	1	1	8		
	413	526	46	4	87	42	179	3	2	12	1	1	3		
	223	377	69	40	251	29	219	2	2	9	2	2	9		
	100	114	0	0	0	0	0	0	0	0	0	0	0		
	349	509	57	5	150	50	476	3	3	67	9	9	92		
State		292	270	106		180		9	8		14	14			
1637	2602	total:	292	270	106	180		9	8		14	14			
Statewide ranges:															
Out of State Segregation Summary April 2014															
		Segregation totals										SFI totals			
Flow Census	Facility	# of I/Ms	# of episodes	Admin episodes	LOS range	Disc episodes	LOS range	Admin I/Ms	Admin Episodes	LOS range	I/Ms	Disc Episodes	LOS range		
ADC	455	0	0	0	0	0	0	0	0	0	0	0	0		
	38	0	0	0	0	0	0	0	0	0	0	0	0		
	1	0	0	0	0	0	0	0	0	0	0	0	0		
	494	0	0	0	0	0	0	0	0	0	0	0	0		
Statewide Ranges:															
2131	2602	292	270	106		180		9	8		14	14			
SFI Inmates in Close Custody Housing Not Appearing in Segregation Section of this Report															
Facility	# Inmates	# episodes	#days												
CRCF	3	3	16												
MVRCF	7	7	87												
NERCF	0	0	0												
NSCF	0	0	0												
NWSCF	0	0	0												
SSCF	17	16	379												
State	27	26	482												

A problem in the data entry system has affected the format and formula of "length of stay" numbers. The Department is working to find and correct this problem.

Vermont Department of Corrections
Segregation and Self Harm

SIB Behavior in All Locations - Non-SFI and SFI														
Total Non-SFI				Total SFI				Total						
Rating	B50	B51	B52	B53	Rating	B50	B51	B52	B53	Rating	B50	B51	B52	B53
CRCF	24	2	0	0	CRCF	3	0	0	0	CRCF	27	2	0	0
MVRFC	1	0	0	0	MVRFC	0	0	0	0	MVRFC	1	0	0	0
NERCF	2	2	0	0	NERCF	0	0	0	0	NERCF	2	2	0	0
NSCF	4	0	0	0	NSCF	0	0	0	0	NSCF	4	0	0	0
NWSCF	1	1	0	0	NWSCF	0	0	0	0	NWSCF	1	1	0	0
SSCF	8	3	0	0	SSCF	8	1	0	0	SSCF	20	4	0	0
State totals:	40	8	0	0	State totals:	11	1	0	0	State totals:	55	9	0	0
SIB Behavior by SFI Away from General Population														
In Therapeutic Management Units				In Seg or Restricted Close Custody										
Rating	B50	B51	B52	B53	Rating	B50	B51	B52	B53					
CRCF	0	0	0	0	CRCF	0	0	0	0					
MVRFC	0	0	0	0	MVRFC	0	0	0	0					
NERCF	0	0	0	0	NERCF	0	0	0	0					
NSCF	0	0	0	0	NSCF	0	0	0	0					
NWSCF	0	0	0	0	NWSCF	0	0	0	0					
SSCF	1	1	0	0	SSCF	3	1	0	0					
State totals:	1	1	0	0	State totals:	3	1	0	0					
KEY	KEY													
ADC = Average Daily Census	SIB = Self-injurious behavior													
SFI = Serious Functional Impairment	CCWC = Caledonia Community Work Camp													
I/M = Inmate	CRCF = Chittenden Regional Correctional Facility													
Admin = Administrative	NSCF = Northern State Correctional Facility													
Disc = Disciplinary	MVRFC = Marble Valley Regional Correctional Facility													
LOS = Length of Stay	NERCF = Northeast Regional Correctional Facility													
	NWSCF = Northwest State Correctional Facility													
	SEWC = Southeast Work Camp													
	SSCF = Southern State Correctional Facility													
	SHCF = Beattyville, KY													
	(No Seg)													
	(No Seg)													